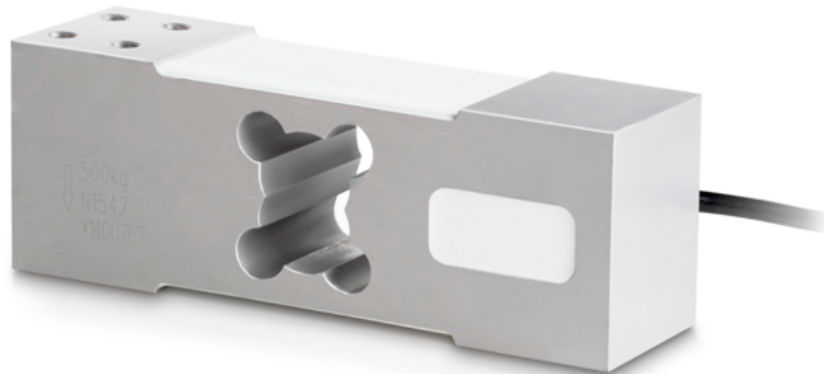


# KERN CP 600-3P8

Single-point load cell made of aluminium

**KERN**<sup>®</sup>



## Article codes, product groups & Status information

Model article-code	CP 600-3P8
Model-Serie	CP P8
Assortment	Sauter
Product Type	Measuring cells
Product group	Single-point load cells
Product usage type	Main article
EAN code (Model)	4045761308404
Planned start date	2023-1HJ
Customs tariff number	84239010
CE Label	Yes
Country of Origin	CN

## Technical data - Primary

Force directions	Compression
OIML class	C3
Weighing capacity	600 kg

## Technical data - Construction

IP Protection	IP65
Material	Aluminium
cable length	3 m
Mounting force in	4x Gewindebohrung M8
Mounting force out	4x Gewindebohrung M8

## Technical data - Power supply

Excitation Voltage min.	5 V
-------------------------	-----

## Functions

Standard

Excitation Voltage max. 12 V

## Technical data - Measuring system

Full scale output	2 mV/V
combined error	0,02%
load cell connection	6-Leiter
measuring applications	Mass

## Technical data - Environmental conditions

Usage Temperature (min)	-10 °C
Usage temperature (max)	40 °C

## Technical data - Packing & Shipping

Dimensions packaging (W×D×H)	180×110×75 mm
Gross weight	1,8 kg
Net weight	1,8 kg
Shipping method	Parcel service
Packaging component - by weight - cardboard	50 g
Delivery time	1 d

## Technical data - Verification

Resolution loadcell (e)	3.000 e
-------------------------	---------

# KERN CP 600-3P8

Single-point load cell made of aluminium

